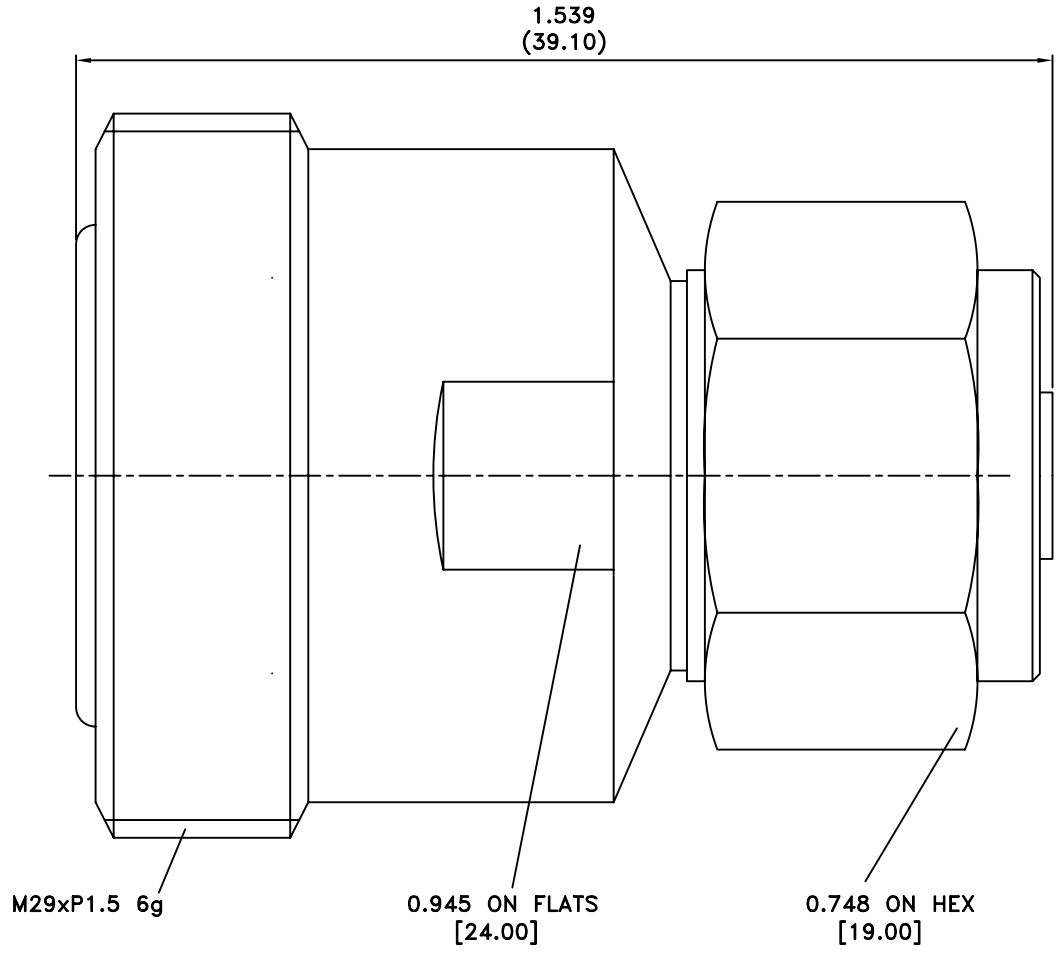


EDITION	DESCRIPTION	DRAWN	DATE
A	INITIAL RELEASE		01/13/99
B	UPDATE DRAWING FORMAT MODIFY PLATING SPEC		05/22/05
C	ADDED NOTED. ISOMETRIC VIEW & LOW PIM ADDED IN DESCRIPTION		10/03/12



TITLE 7/16 FEMALE TO N MALE ADAPTOR.
LOW PIM

Edit Code.
716FSNMADP5000-1

CHECKED J. Lin

DRAWER Eddie

TOLERANCES			
DIMENSIONS ARE IN MILLIMETER			
UNLESS OTHERWISE SPECIFIED, DIMENSIONS ARE IN INCHS AND TOLERANCES ARE:			
2	PLACE DECIMAL	±.015	(0.381 mm)
3	PLACE DECIMAL	±.005	(0.127 mm)
ANGLES ± 1°			
SCALE	4.1 : 1	UNIT	MM

FILE NO. D:\

EDITION: C DATE 10/03/12

NO	Description	Q'ty	Material	Finish
4	INSULATOR	1	PTFE	NATURAL
3	NUT	1	BRASS	NICKEL
2	INNER CONDUCTOR	1	SPRING COPPER	SILVER
1	OUTER CONDUCTOR	1	BRASS	WHITE BRONZE