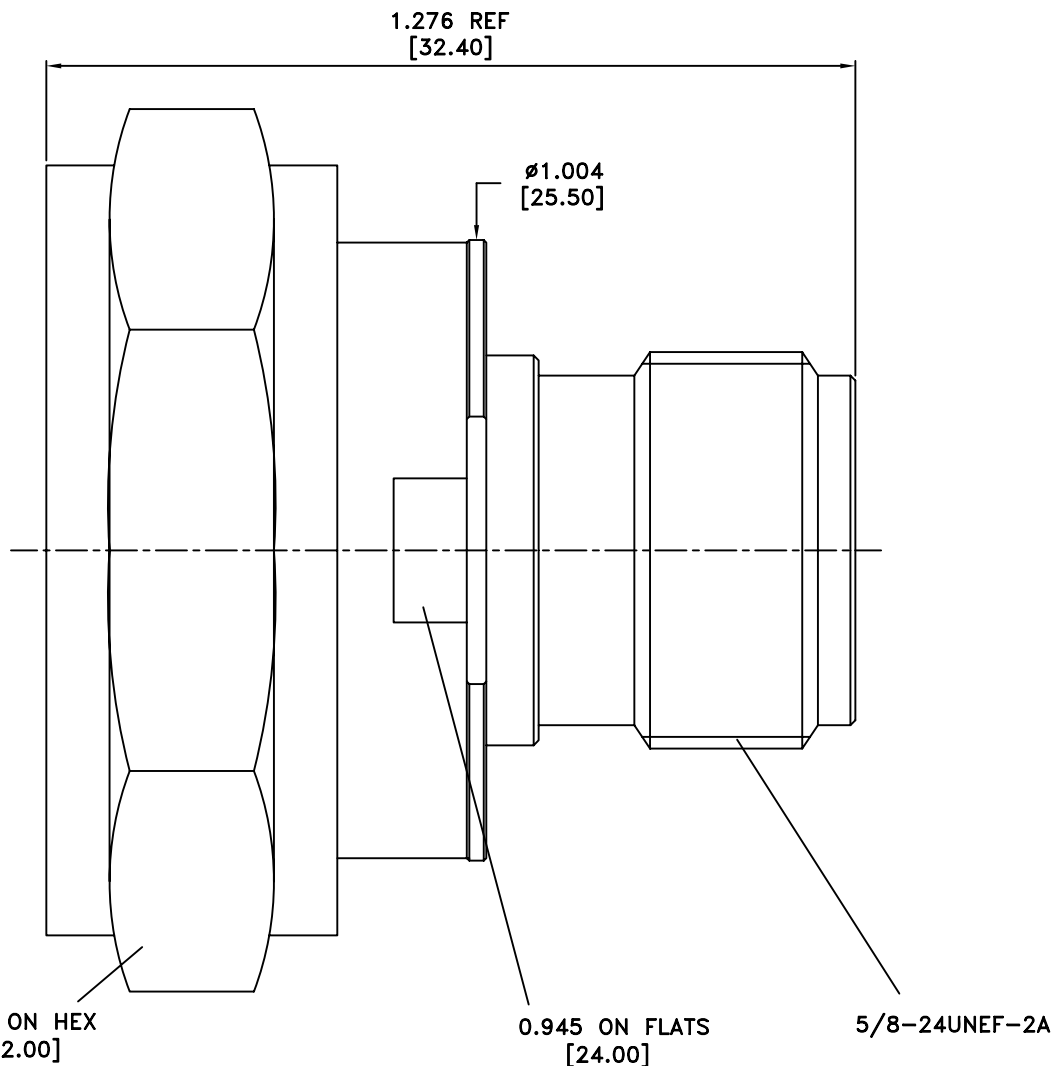


EDITION	DESCRIPTION	DRAWN	DATE
A	RELEASE TO MFG		09/07/09
B	BOM UPDATE		09/03/10
C	ADDED NOTES. ISOMETRIC VIEW & LOW PIM ADDED IN DESCRIPTION		10/01/12



TOLERANCES			
DIMENSIONS ARE IN MILLIMETER			
UNLESS OTHERWISE SPECIFIED, DIMENSIONS ARE IN INCHS AND TOLERANCES ARE:			
2 PLACE DECIMAL	±.015	(0.381 mm)	
3 PLACE DECIMAL	±.005	(0.127 mm)	
ANGLES ± 1°			

TITLE 7/16MALE TO N FEMALE ADAPTOR. LOW PIM	CHECKED J. Lin
Edit Code. 716MSNFADP5000-1	DRAWER Eddie
FILE NO.D:\	EDITION: C DATE 10/01/12

NO	Description	Q'ty	Material	Finish
4	NUT	1	BRASS	NICKEL
3	INSULATOR	1	PTFE	NATURAL
2	OUTER CONDUCTOR	1	BRASS	WHITE BRONZE
1	INNER CONDUCTOR	1	SPRING COPPER	SILVER