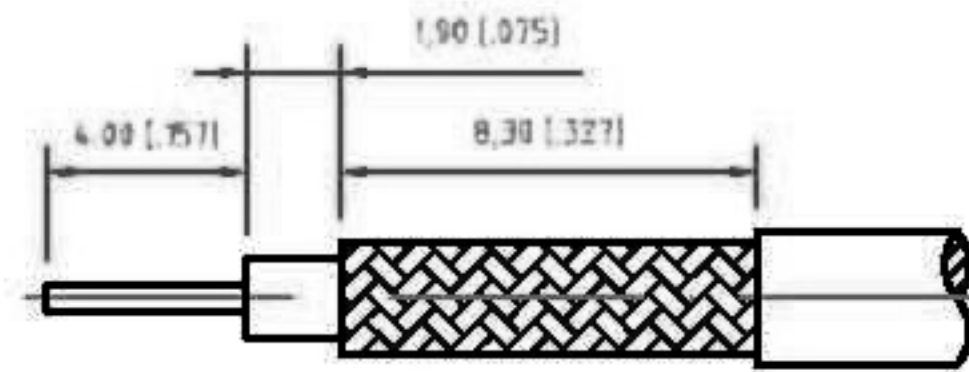
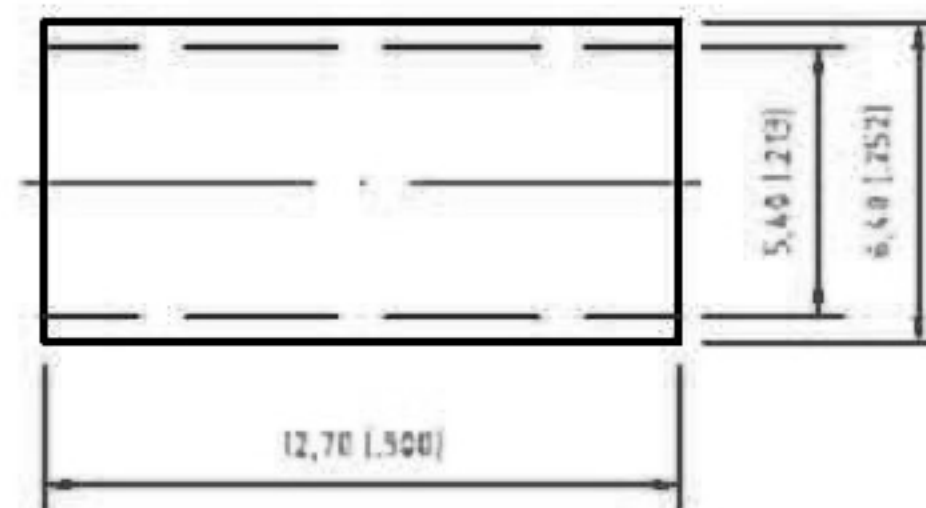
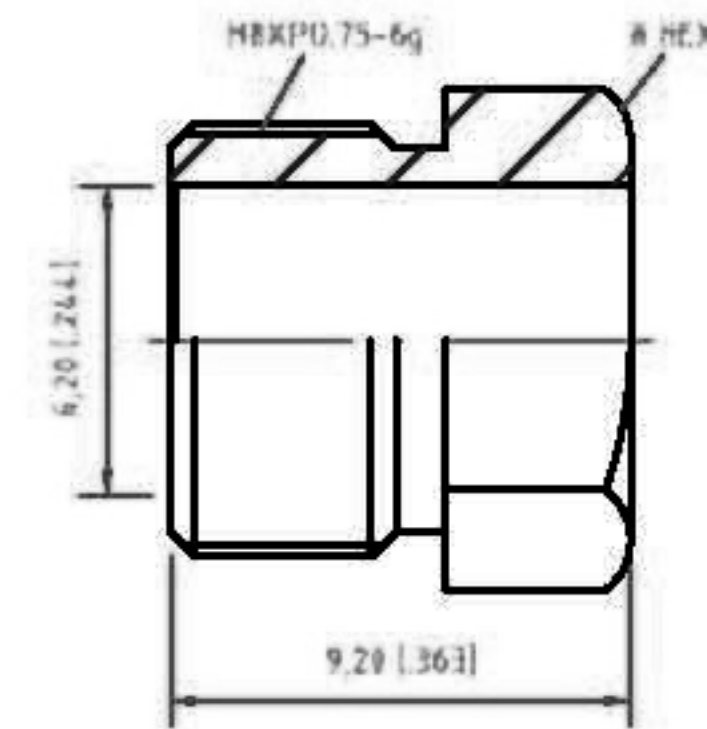
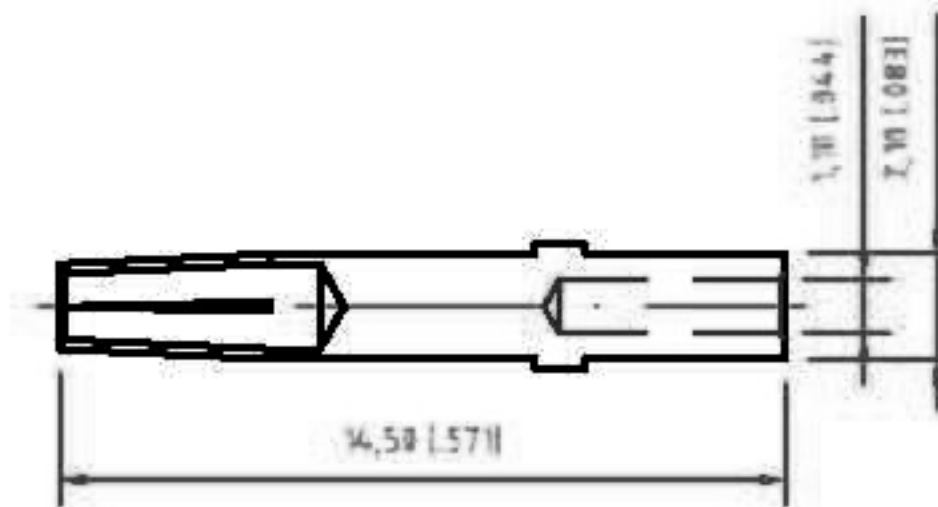
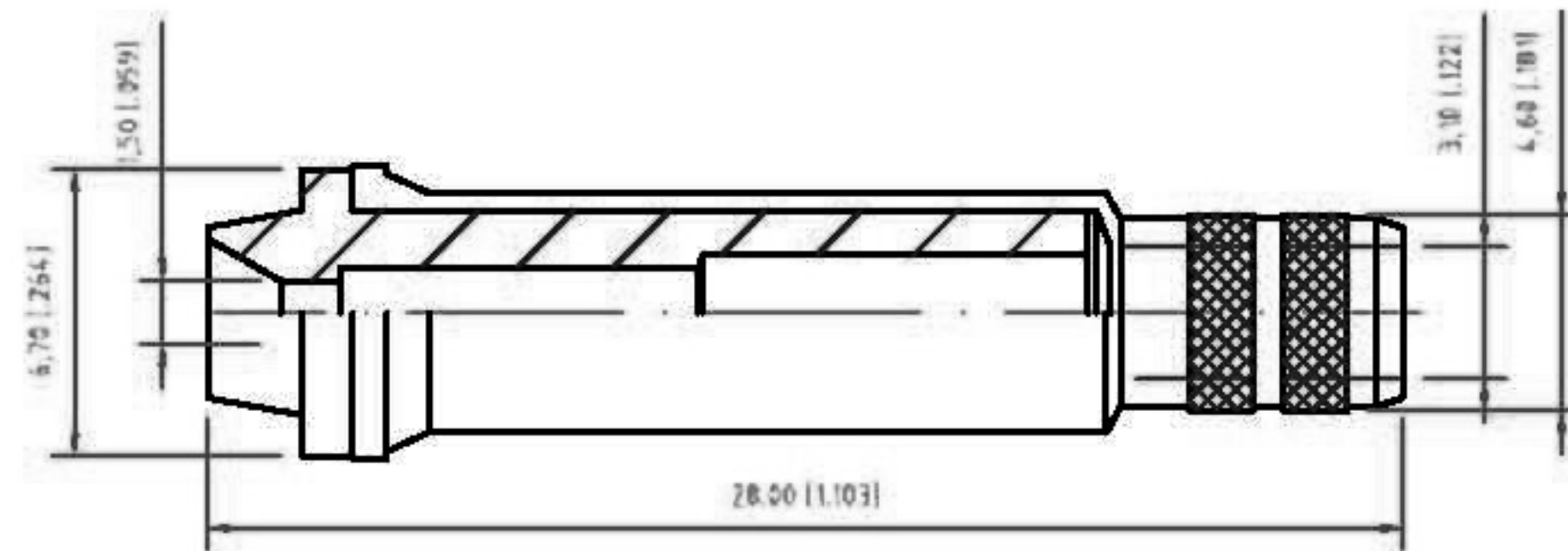


EDITION	DESCRIPTION	DRAWN	DATE
	UPDATE DRAWING FORMAT		05/22/03



RECOMMENDED
CABLE STRIPPING DIM'S



NOTE:
1- CRIMPED FERRULE HEX CRIMP SIZE .213"
2- CRIMPED CONTACT HEX CRIMP SIZE .068"



TITLE	FME ROTATING NIPPLE	CHECKED	J. Lin
Edt Code	FMEFS00103F5000-1	DRAWER	Mike
FILE NO.		EDITION	8
		DATE	05/22/03

TOLERANCES			
DIMENSIONS ARE IN MILLIMETER			
UNLESS OTHERWISE SPECIFIED AND IN MILLIMETER DIMENSIONS IN Ø ARE IN INCH AND FOR CUSTOMER REFERENCE ONLY.			
UNLESS OTHERWISE SPECIFIED TOLERANCES FOR MILLIMETER ARE:			
0.5 - 3.0	± 0.10mm		
3.0 - 6.0	± 0.15mm		
6.0 - 15.0	± 0.20mm		
UNLESS OTHERWISE SPECIFIED TOLERANCES FOR INCH ARE:			
.005 - .010	± 0.0005"		
.010 - .020	± 0.0008"		
.020 - 0.050	± 0.0012"		

NO	Description	Q'ty	Material	Finish
5	FERRULE	1	COPPER	NICKEL
4	HEX NUT	1	BRASS	NICKEL
3	CONTACT PIN	1	PHOS.BRONZE	GOLD
2	INSULATOR	1	TEFLON	NATURAL
1	SHELL/Body	1	BRASS	NICKEL