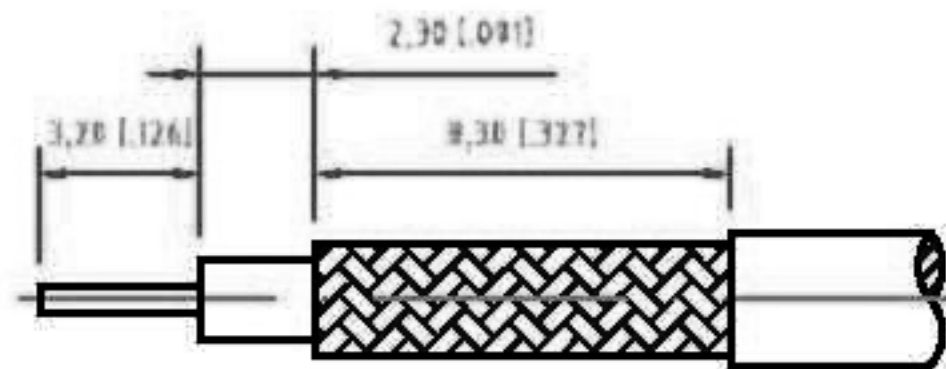
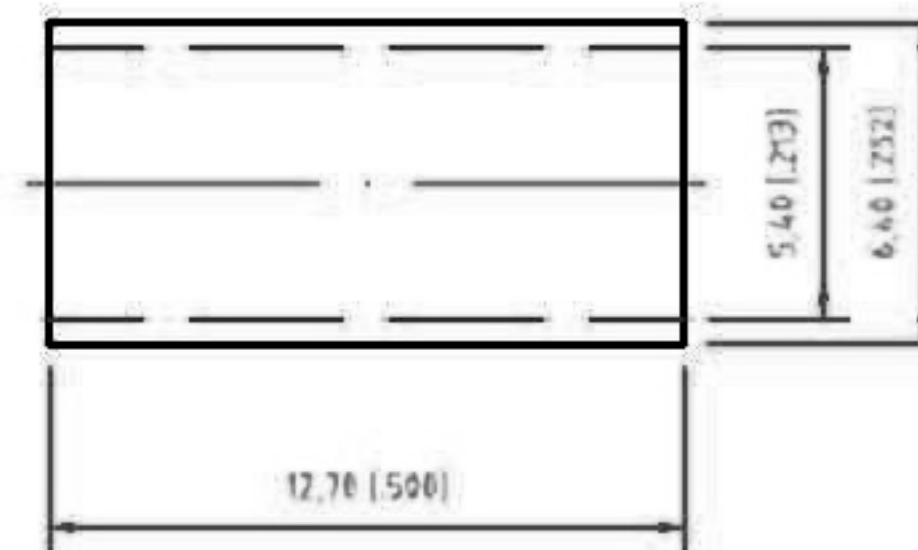
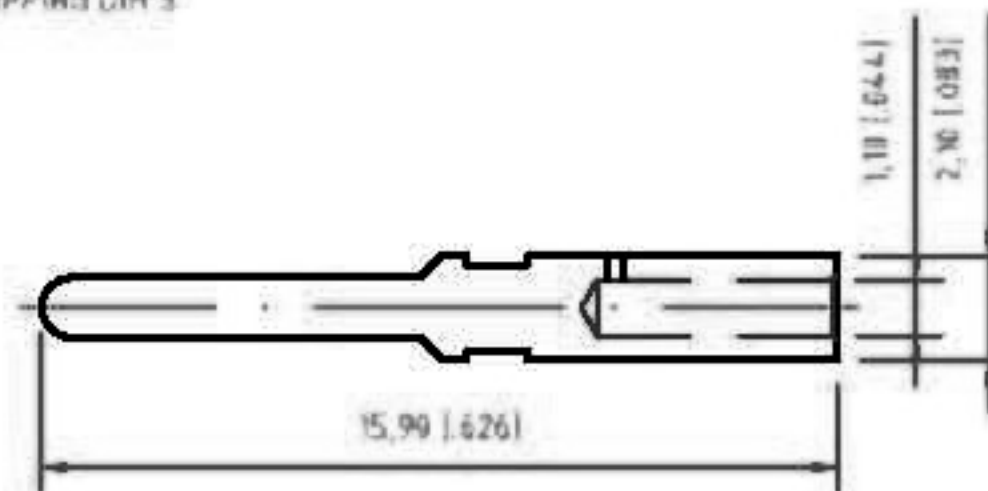
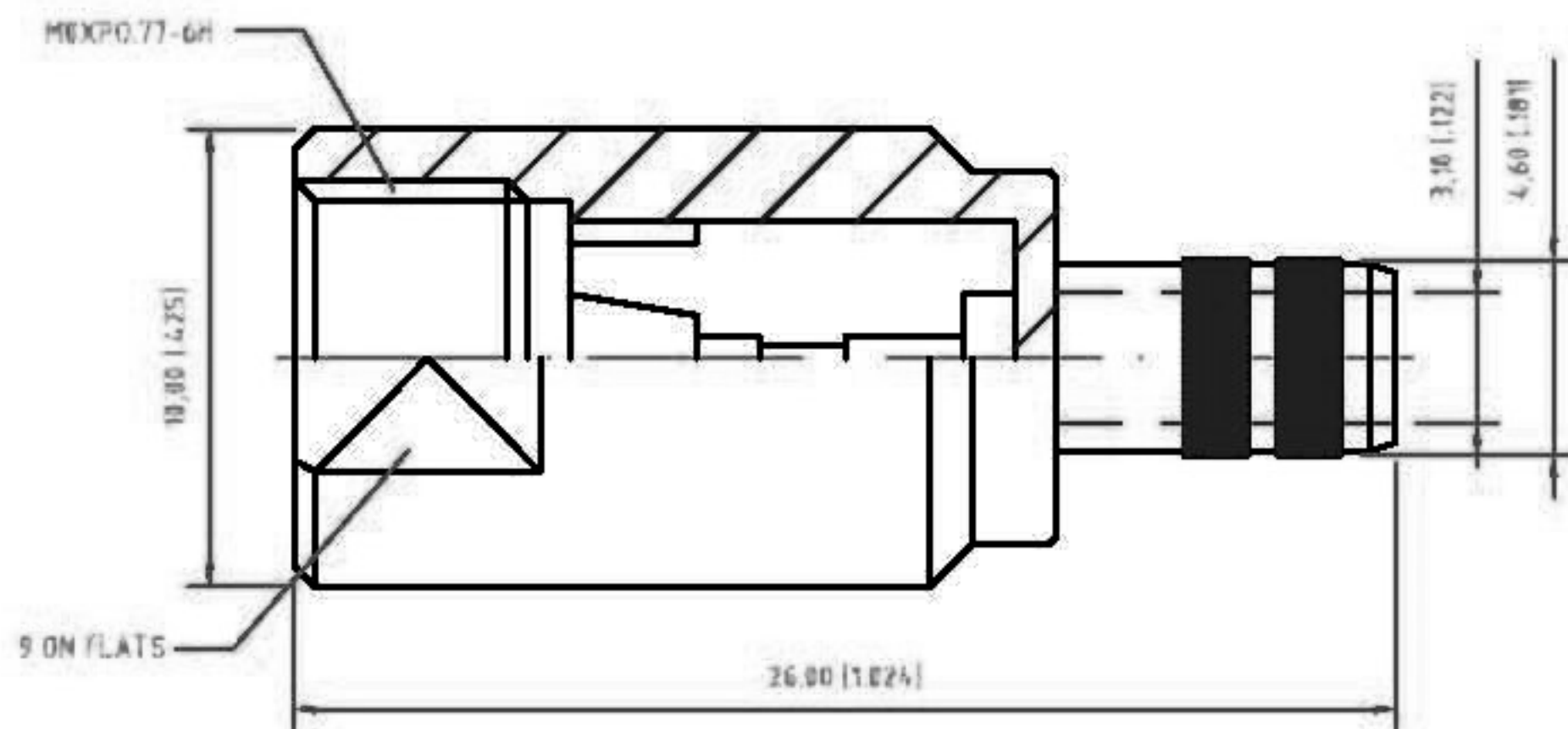


EDITION	DESCRIPTION	DRAWN	DATE
	UPDATE DRAWING FORMAT		07/31/07



RECOMMENDED  
CABLE STRIPPING DIM'S



TITLE	FME CRIMP PLUG	CHECKED	J. Lin
Edt Code	FMEMS00101F5000-1	DRAWER	Mike
FILE NO.		EDITION	DATE 07/31/07

TOLERANCES			
DIMENSIONS ARE IN MILLIMETER			
UNLESS OTHERWISE SPECIFIED AND IN ALL OTHER SPECIFICATIONS IN A PART OR DRAWING FOR CUSTOMER PRODUCTS ONLY.			
UNLESS OTHERWISE SPECIFIED TOLERANCES FOR MILLIMETER ARE:			
0.5 - 0.9mm	± 0.10mm		
1.0 - 4.75mm	± 0.20mm		
5.0 - 30.0mm	± 0.30mm		
30.0 - 100.0mm	± 0.50mm		
100.0 - 400.0mm	± 0.75mm		
400.0 - 1000.0mm	± 1.00mm		
SCALE	NA	UNIT	MM

NO	Description	Q'ty	Material	Finish
4	FERRULE	1	COPPER	NICKEL
3	CONTACT PIN	1	BRASS	GOLD
2	INSULATOR	1	TEFLON	NATURAL
1	SHELL/Body	1	BRASS	NICKEL