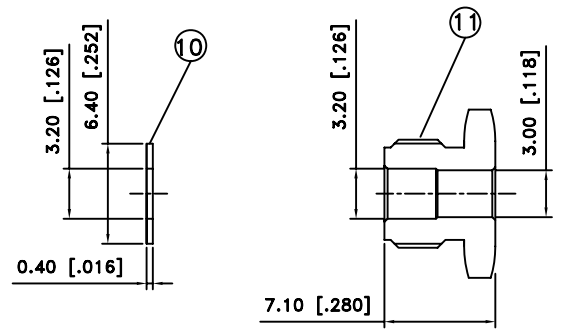
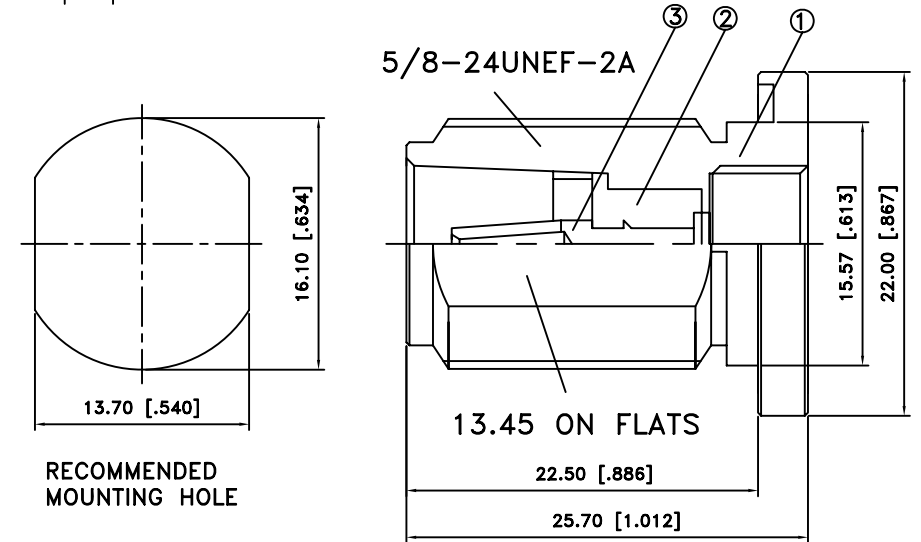
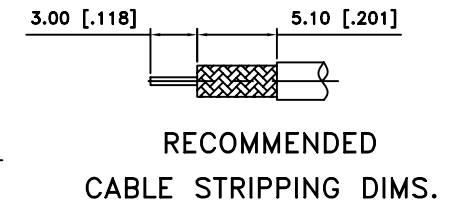
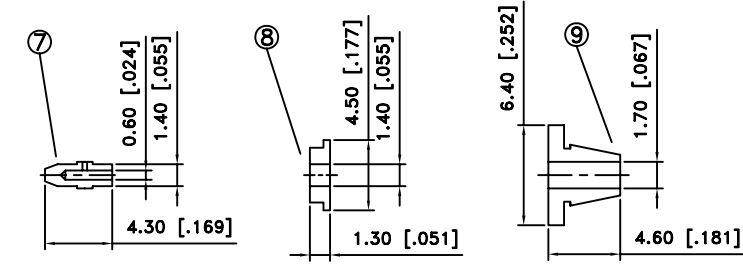
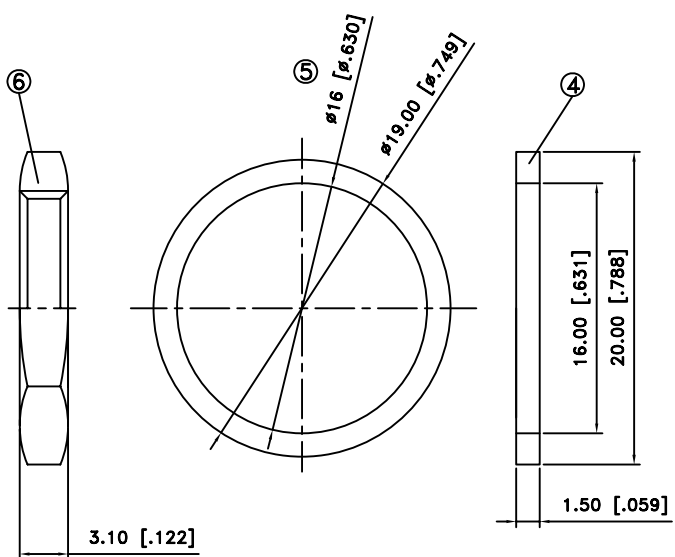


REV.	DATE	DESCRIPTION
D	04/11/97	ADD $\phi 15.75$ BODY DIMENSION
E	01/19/98	CHANGE TO $\phi 15.75$ BODY DIMENSION
F	03/19/05	UPDATE DRAWING FORMAT/CHANGE STRIPPING DIMS
G	02/08/06	UPDATE ITEM ⑤ TO FLAT WASHER
H	03/20/07	REVISE PLATING TO NEXCOTE



NOTE:
1.CONTACT PIN TO SOLDER
2.MAX. PANEL THICKNESS = 6.5mm

NO	DESCRIPTION	MATERIAL	FINISH	QTY
11	HEX NUT	BRASS	NEXCOTE	1
10	WASHER	BRASS	NEXCOTE	1
9	TOP HAT	BRASS	NEXCOTE	
8	INSULATOR	TEFLON	NATURAL	1
7	CONTACT PIN	BRASS	GOLD	1
6	HEX NUT	BRASS	NEXCOTE	1
5	FLAT WASHER	BRASS	NEXCOTE	1
4	GASKET	SILICONE	RED	1
3	CONTACT PIN	BER. COPPER	GOLD	1
2	INSULATOR	TEFLON	NATURAL	1
1	BODY	BRASS	NEXCOTE	1



TITLE	N BULKHEAD CLAMP JACK (FOR RG-174/U, 188A/U, 316/U)	CHECKED	J. Lin
Edit Code.	NFBS00207L5000-1	DRAWER	Eddie
FILE NO. C:		EDITION: H	DATE 03/20/07

UNLESS OTHERWISE SPECIFIED DIMENSIONS ARE IN MILLIMETERS. DIMENSIONS IN () ARE IN INCHES AND FOR CUSTOMER REFERENCE ONLY.

UNLESS OTHERWISE SPECIFIED TOLERANCES FOR MILLIMETERS ARE:
0.5 - 8mm ± 0.20 mm
8 - 30mm ± 0.40 mm
30 - 120mm ± 0.50 mm

UNLESS OTHERWISE SPECIFIED TOLERANCES FOR MILLIMETERS ARE:
.020 - .315 = ± 0.007 "
.315 - 1.180 = ± 0.015 "
1.180 - 4.724 = ± 0.020 "

SCALE	NA	UNIT	MM
-------	----	------	----