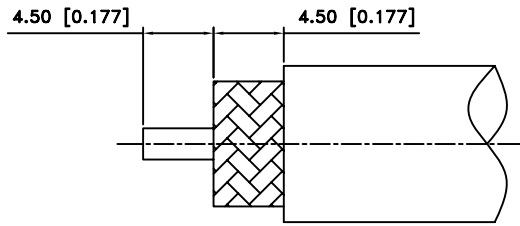
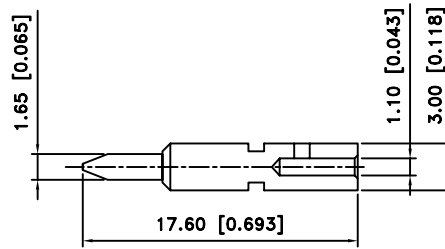


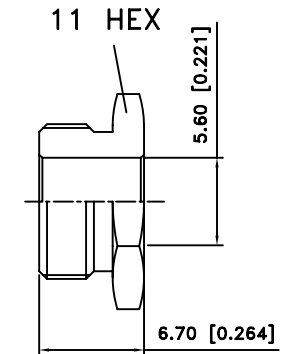
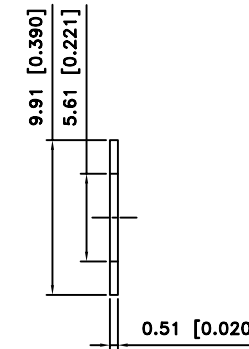
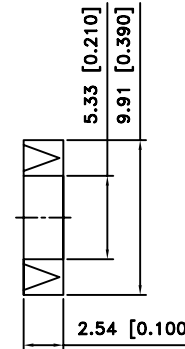
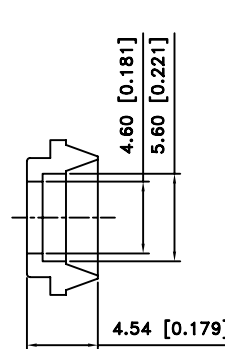
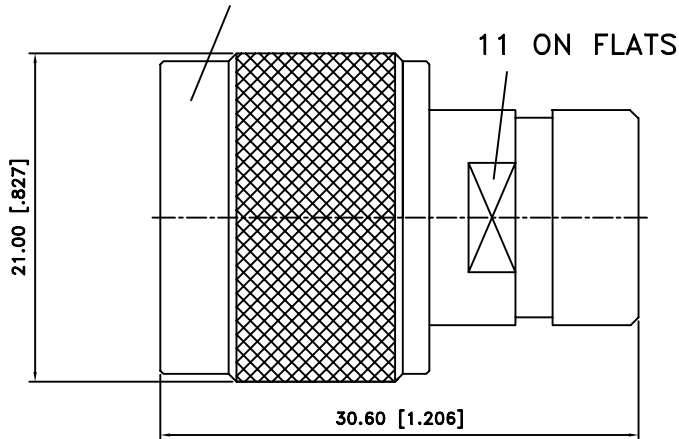
REV.	DATE	DESCRIPTION
A	06/28/00	REVISE OLD PRINT
B	05/30/04	UPDATE DRAWING FORMAT



RECOMMENDED
CABLE STRIPPING DIMS.



5/8-24UNEF-2B



NOTE:

1.CRIMPED CONTACT PIN
HEX CRIMP SIZE .100"
OR SOLDER



ChoiceRight Electronic Inc

UNLESS OTHERWISE SPECIFIED DIMENSIONS ARE IN MILLIMETERS. DIMENSIONS IN [] ARE IN INCHES AND FOR CUSTOMER REFERENCE ONLY.

UNLESS OTHERWISE SPECIFIED TOLERANCES FOR MILLIMETERS ARE:
0.5 - 8mm ± 0.20mm
8 - 30mm ± 0.40mm
30 - 120mm ± 0.50mm

UNLESS OTHERWISE SPECIFIED TOLERANCES FOR MILLIMETERS ARE:
.020 - .315 = ± 0.007"
.315 - 1.180 = ± 0.015"
1.180 - 4.724 = ± 0.020"

TITLE N CLAMP PLUG (FOR RG-58C/U, 58/U, 142A/U, 223/U CABLE)		CHECKED J. Lin		SCALE NA UNIT MM			
Edit Code. NMS00202F5000-1		DRAWER Eddie					
FILE NO. C:	EDITION: B	DATE 05/30/04					

NO	DESCRIPTION	MATERIAL	FINISH	QTY
7	HEX NUT	BRASS	NEXCOTE	1
6	WASHER	BRASS	NEXCOTE	1
5	GASKET	SILICONE	RED	1
4	BRAID CLAMP	BRASS	NEXCOTE	1
3	CONTACT PIN	BRASS	GOLD	1
2	INSULATOR	TEFLON	NATURAL	1
1	BODY/SHELL	BRASS	NEXCOTE	1