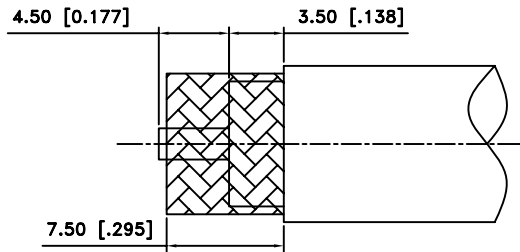
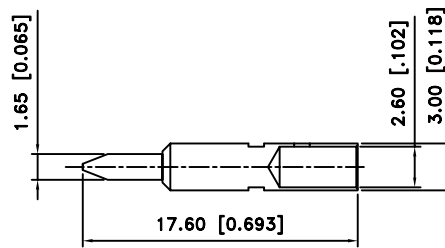


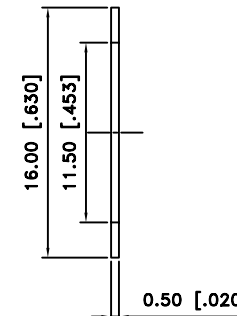
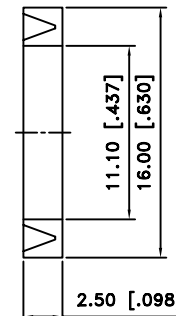
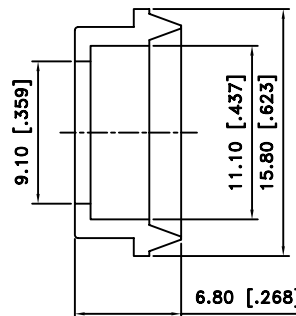
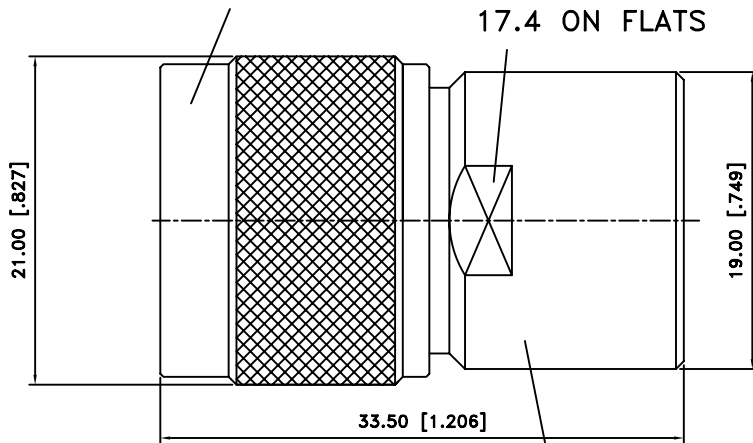
| REV. | DATE | DESCRIPTION |
|------|----------|-----------------------|
| A | 06/05/03 | UPDATE DRAWING FORMAT |



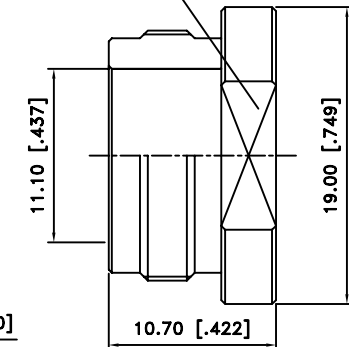
RECOMMENDED CABLE STRIPPING DIMS



5/8-24UNEF-2B



15.8 ON FLATS



11/16-24UNEF-2B

NOTE:

1.CRIMPED CONTACT PIN
HEX CRIMP SIZE .100"



ChoiceRight Electronic Inc

UNLESS OTHERWISE SPECIFIED DIMENSIONS ARE IN MILLIMETERS. DIMENSIONS IN () ARE IN INCHES AND FOR CUSTOMER REFERENCE ONLY.

UNLESS OTHERWISE SPECIFIED TOLERANCES FOR MILLIMETERS ARE:
0.5 - 8mm ± 0.20mm
8 - 30mm ± 0.40mm
30 - 120mm ± 0.50mm

UNLESS OTHERWISE SPECIFIED TOLERANCES FOR MILLIMETERS ARE:
.020 - .315 = ± 0.007"
.315 - 1.180 = ± 0.015"
1.180 - 4.724 = ± 0.020"

| | | | | | | | |
|-------------|--|---------------|---------|--------|------|----|--|
| TITLE | N CLAMP PLUG (FOR RG-8/U, 213/U, 214/U CABLE) | | CHECKED | J. Lin | | | |
| Edt Code. | NMS00203B5000-1 | | DRAWER | Eddie | | | |
| FILE NO. C: | EDITION: A | DATE 06/05/03 | SCALE | NA | UNIT | MM | |

| NO | DESCRIPTION | MATERIAL | FINISH | QTY |
|----|-------------|----------|---------|-----|
| 7 | NUT | BRASS | NEXCOTE | 1 |
| 6 | WASHER | BRASS | NEXCOTE | 1 |
| 5 | GASKET | SILICONE | RED | 1 |
| 4 | BRAID CLAMP | BRASS | NEXCOTE | 1 |
| 3 | CONTACT PIN | BRASS | GOLD | 1 |
| 2 | INSULATOR | TEFLON | NATURAL | 1 |
| 1 | BODY/SHELL | BRASS | NEXCOTE | 1 |