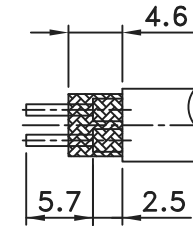
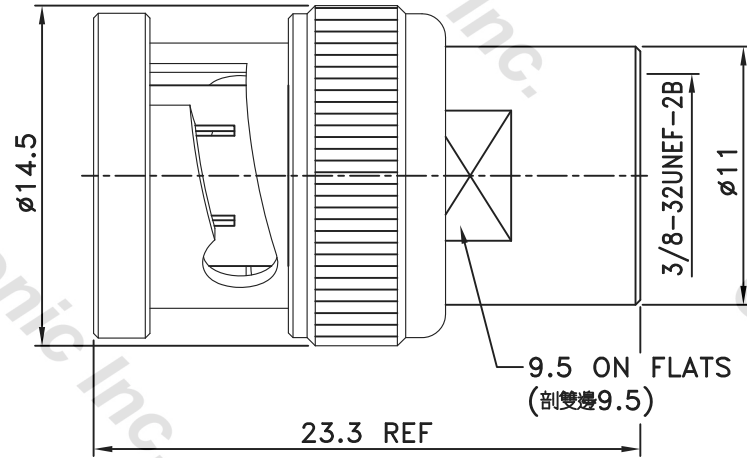
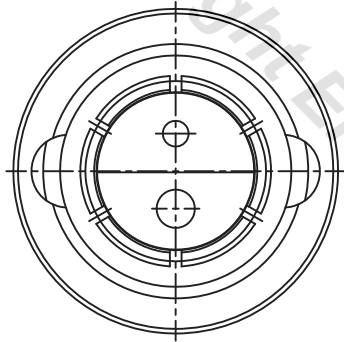
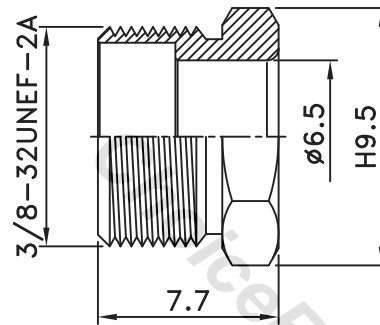
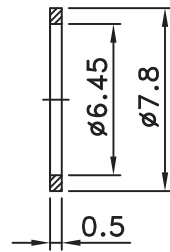
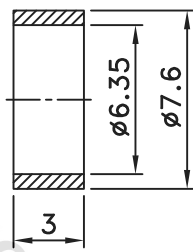
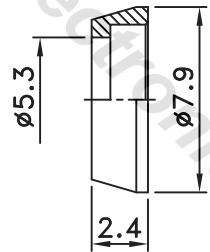
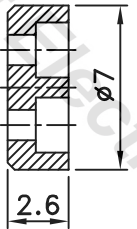
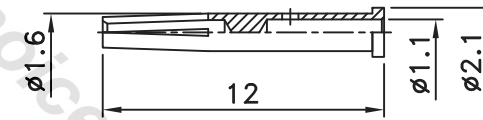
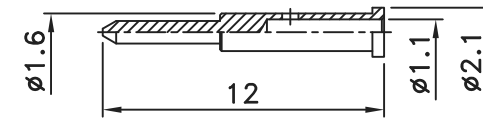


EDITION	DESCRIPTION	DRAWN	DATE
B	Modification on Recommended Cable Stripping Dim's	Eddie	05/09/17
C	1. Adding the contact pin wall for capture. 2. Changing the Insulator Dimension to hold the contact.	Eddie	06/09/17



RECOMMENDED
CABLE STRIPPING DIM'S
(建議剝線尺寸)(1:2)



CABLE:BELDEN 9272

14	CLAMP NUT	1	BRASS	NICKEL
13	WASHER	1	BRASS	NICKEL
12	GASKET	1	SI-RUBBER	RED
11	BRAID CLAMP	1	BRASS	NICKEL
10	SHELL	1	BRASS	NICKEL
9	GASKET	1	RUBBER	RED
8	RETAINING RING	1	SK5	NICKEL
7	SPRING	1	SK5	NICKEL
6	WASHER	1	BRASS	NICKEL
5	INSULATOR	1	PTFE	NATURAL
4	INSULATOR	1	PTFE	NATURAL
3	PIN	1	PHOS. BRONZE	GOLD
2	PIN	1	PHOS. BRONZE	GOLD
1	BODY	1	BRASS	NICKEL
NO	DESCRIPTION/DRAWING NO.	Q'TY	MATERIAL	FINISH



ChoiceRight Electronic Inc

TOLERANCES
DIMENSIONS ARE IN MILLIMETER

UNLESS OTHERWISE NOTED TOLERANCES
0.5-6=±0.2
6-30=±0.4
30-120=±0.6
120-315=±1.0
ANGLES=±5°

TITLE TWIN BNC CLAMP PLUG

CHECKED J. Lin

Edit Code. TWMS0170200-1

DRAWER Eddie

FILE NO.E:

EDITION: C DATE 06/09/17

SCALE 3/1 UNIT MM